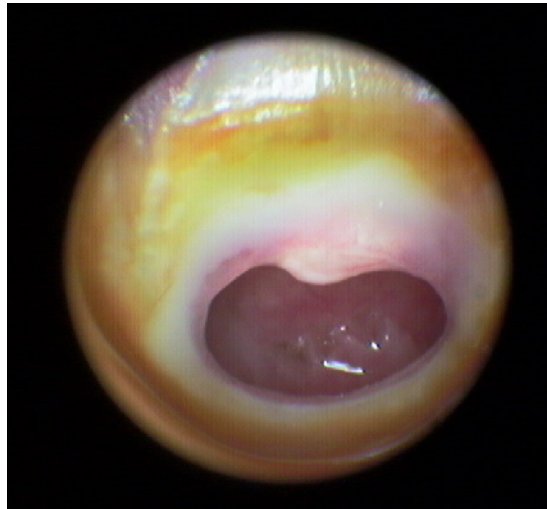


CHRONIC SUPPURATIVE OTITIS MEDIA (CSOM)

FEATURES

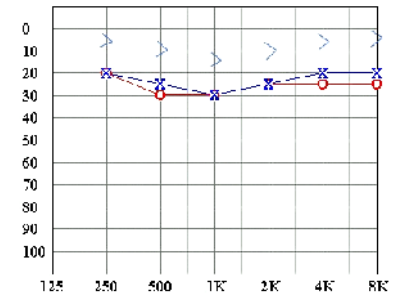
MOST COMMON SYMPTOMS

- Otorrhoea (discharge from ear)
- Itchy ear
- Hearing loss



AUDIOLOGY

Mild Conductive hearing loss



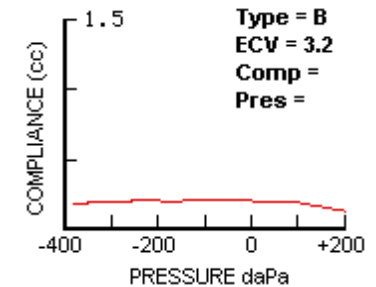
DIAGNOSIS

- Otorrhoea (discharge from ear) with perforation of tympanic membrane
- Perforated tympanic membrane
- Ear drum may rupture → discharge in ear canal



TYMPANOMETRY

Usually Type B Tympanogram



OTHER AGGRAVATING FACTORS

- Contaminated water entering the ear
- Upper respiratory tract infection (cold)
- Stopping breast feeding early
- Reflux
- Passive cigarette smoke exposure
- Overcrowding
- Poor hygiene

PREVENTATIVE MEASURES

- Continue breast feeding until 12 weeks
- Avoiding smoking around babies and children
- Avoid prop-feeding, with the baby lying flat and the bottle "propped up"
- Vaccination including Prevnar
- Early treatment of ear infection to avoid chronic discharge.
- Avoid contaminated water entering ear