

OTITIS MEDIA WITH EFFUSION (OME OR GLUE EAR)

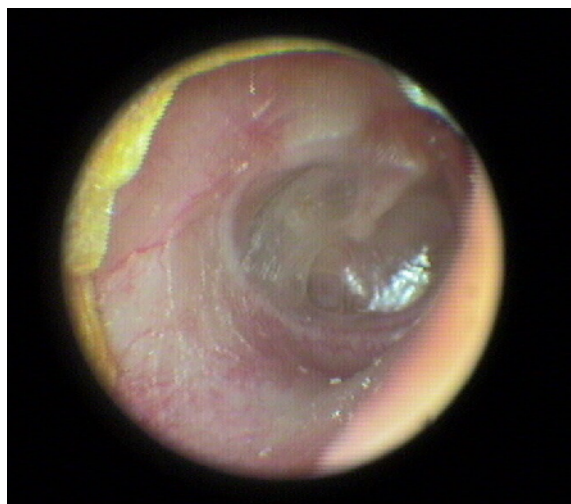
FEATURES

SYMPTOMS IN YOUNG CHILDREN (0-3)

- Balance problems
- Delayed speech development
- Hearing loss (fluid in the middle ear blocks the conduction of sound)
- Irritability and pulling at ear

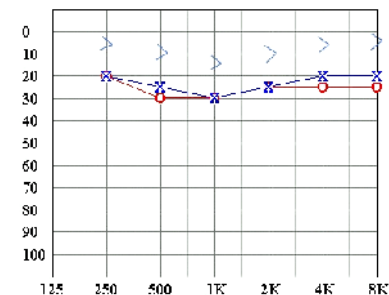
SYMPTOMS IN OLDER CHILDREN (3-7)

- Hearing loss
- Difficulty at school
- Behaviour problems
- Delayed speech and language (may affect reading development)



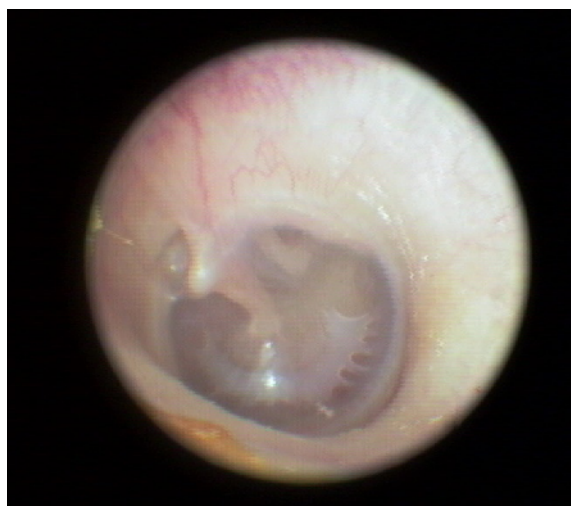
AUDIOLOGY

Mild Conductive hearing loss



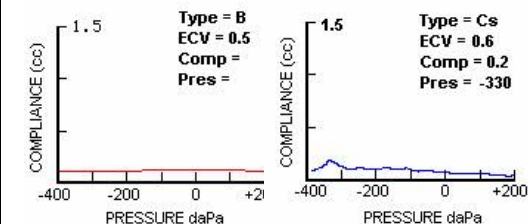
DIAGNOSIS

- Retracted ear drum
- May show fluid levels or bubbles
- Decreased mobility on pneumatic otoscopy
- Different colours – from red to white to yellow



TYMPANOMETRY

Type B or Type C Tympanogram



OTHER AGGRAVATING FACTORS

- Upper respiratory tract infection (cold)
- Reflux
- May follow acute otitis media (AOM)
- Blocked Eustachian tube

PREVENTATIVE MEASURES

- Treatment of colds and upper respiratory tract infections
- Avoid smoking around babies and children
- Early treatment of acute otitis media